

# Health and safety in Danish agriculture

Savonia oktober 2020

OHS advisor Christina Edstrand

**SEGES**

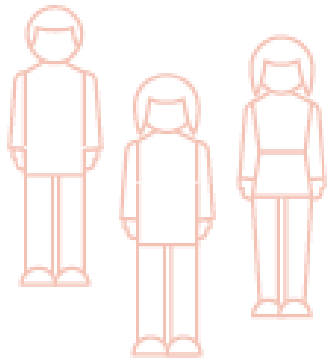
STØTTET AF  
**Promille**afgiftsfonden for landbrug



# About me

- Educated farmer in 1998
- Education for 5 years
- Advisor health and safety and employment law 10 years
- Advisor SEGES 6 years, Health and safety
- Live in the western part of Denmark
- Family with 2 kids a dog and 2 horses.

# About Danish Agriculture and Food Council - SEGES



Denmark has a population of 5,8 million inhabitants. However, the food production is high enough to feed 15 million people

# Farmers in Denmark



- 62% of all land in Denmark is cultivated by farmers
- 2.6 mio ha. cultivated land
- 3.200 beef-cattlefarms
- 2.700 milking-cattlefarms
- 567.000 milking cows
- 2.000 pigfarms
- 13 mio pigs
- 1.000 minkfarms
- 260 poultryfarms
- 80.000 persons working at farms

# SEGES

- SEGES is the main supplier of professional knowledge for the agricultural professions.
- Danish agriculture and food council is the political part of the company, mainoffice in Copenhagen
- SEGES is owned by farmers and is a NGO organization
- At SEGES we develop tools for farmers to get more professional in every way

# Partners

- Our partners at the HS office
- The Danish Working Environment Authority
- Insurance Companies
- Research Institutions
- Farm supplier companies
- EU
- Farmschools
- Colleagues from all over the world

# What we do

- Develop tools for farmers, workers and schools
- Advising at farms
- Talk to farmers who have had an accident
- Speakers at conferences
- Teaching at farmschools
- Do courses for farmers
- Prepares projekt applications
- Political cooperation

# Accidents in agriculture

- 3-10 persons die working at a farm/year
- 275 serious accidents/year
- 33% of all accidents in Denmark happens in agriculture
- Age of most accidents are 18 to 29 year old workers/farmers
- Amount of accidents are increasing every year
- We know at least 50% of accidents are unknown



## Work environment cards Off to a good start



## Pressure washing



Working t

## Pressure washing



- Use earmuffs, goggles and a respirator
- Use a respirator for cleaning work lasting less than three hours. For jobs lasting more than three hours, use either a respirator with fan or a breathing apparatus during the entire activity.
- Respirators should be fitted with filter types P3SL or FFP3SL to protect you from particles in the air which can cause pneumonia or asthma.

### Attention!

- Wet floors and surfaces can be slippery
- Conducting components can shock you
- Never use the pressure washer on humans or animals.



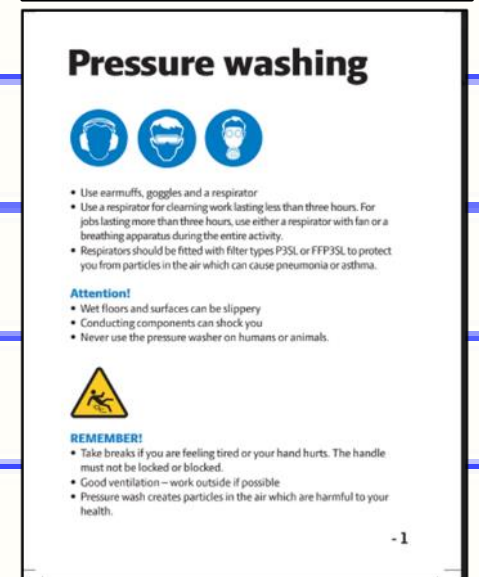
### REMEMBER!

- Take breaks if you are feeling tired or your hand hurts. The handle must not be locked or blocked.
- Good ventilation – work outside if possible
- Pressure wash creates particles in the air which are harmful to your health.



# What are story cards?

- **Graphic**
- **List of potential hazards**
- **Personal Protective Equipment (PPE)**
- **Recommendations and tips**



# How are they used?

---

- **Participants get into small groups and select one card**
- **Group members review the image on the front of the c**
- **Participants address a series of questions in front of t**

# Story card questions

---

- What does the image show?
- Does the image bring up situations or workplace events that have happened to you or someone you know?
- What types of PPE are list on the card?
- Why do you think these types of PPE are recommended for this scenario?







# Safety Award



# Stop-think- act campaign



## STOP OP ... når du har elever ansat

### STOP

**Hvad er det værste der kan ske når elever udfører arbejdsopgaverne?**

- Eleven udfører den stillede opgave, uden opsyn, med risiko for alvorlige arbejds-skader og ulykker.
- Eleven bruger ikke de nød-vendige personlige værnemidler eller hjælpemidler
- Eleven udsættes for en alvorlig arbejdsulykke.



### TÆNK

**Har jeg, forberedt mig på den oplæring eleven skal have?**

- Hvordan ønsker jeg at opgaven udføres sikkert
- Hvilke risici er der ved opgaven
- Alle elever er forskellige, lærer forskelligt og har forskellig tilgang til erhvervet.
- Hvordan synliggør jeg over for eleven hvordan en risiko undgås.



### ARBEJD

**Minimer risikoen, så eleven arbejder sikker**

- Instruer eleven i, hvordan I plan-lægger og arbejder sikkert
- Uanset om eleven har erhvervs-erfaring skal du støtte eleven og tage afsæt i, hvad eleven kan i forvejen.
- Før opsyn med eleven
- Sæt ord på handlingen når du viser eleven opgavens ud-førelse – vær sikker på at instruktionen er forstået.
- Følg op og giv feedback med jævne mellemrum.



## ”Safe farmers”

- Science project
- Back up for the leader to prior safety
- Meetings and ”follow up” by phone in 6 months
- Measure the difference between two groups of farmers